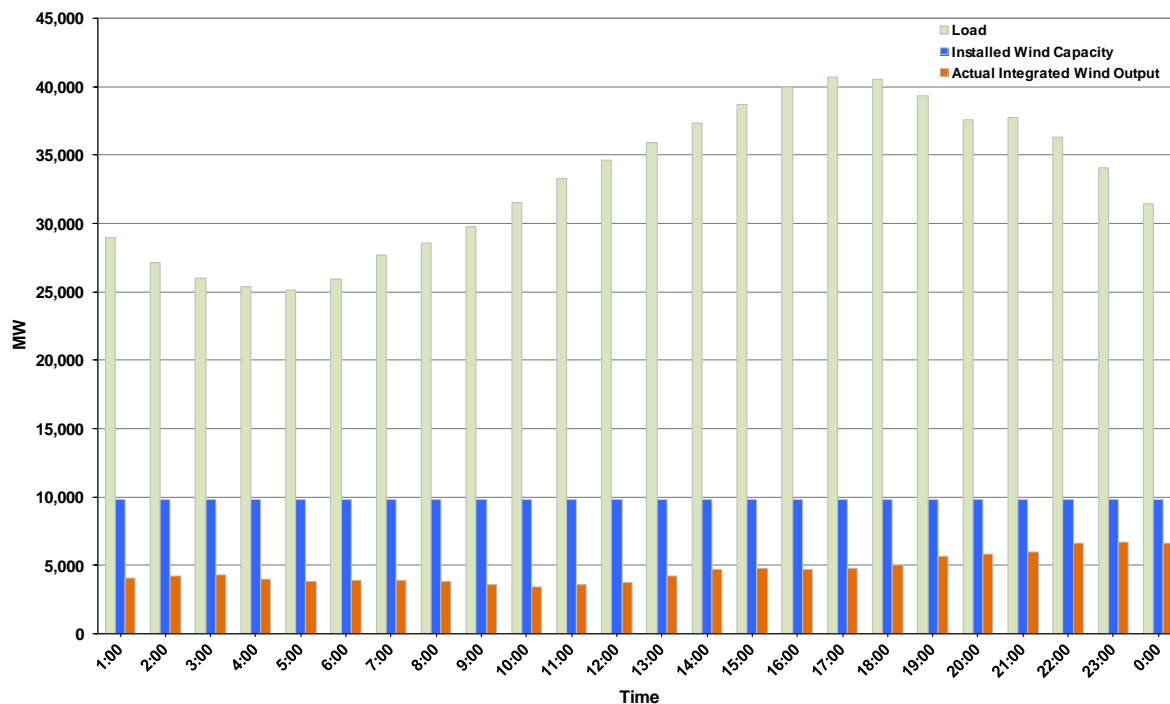




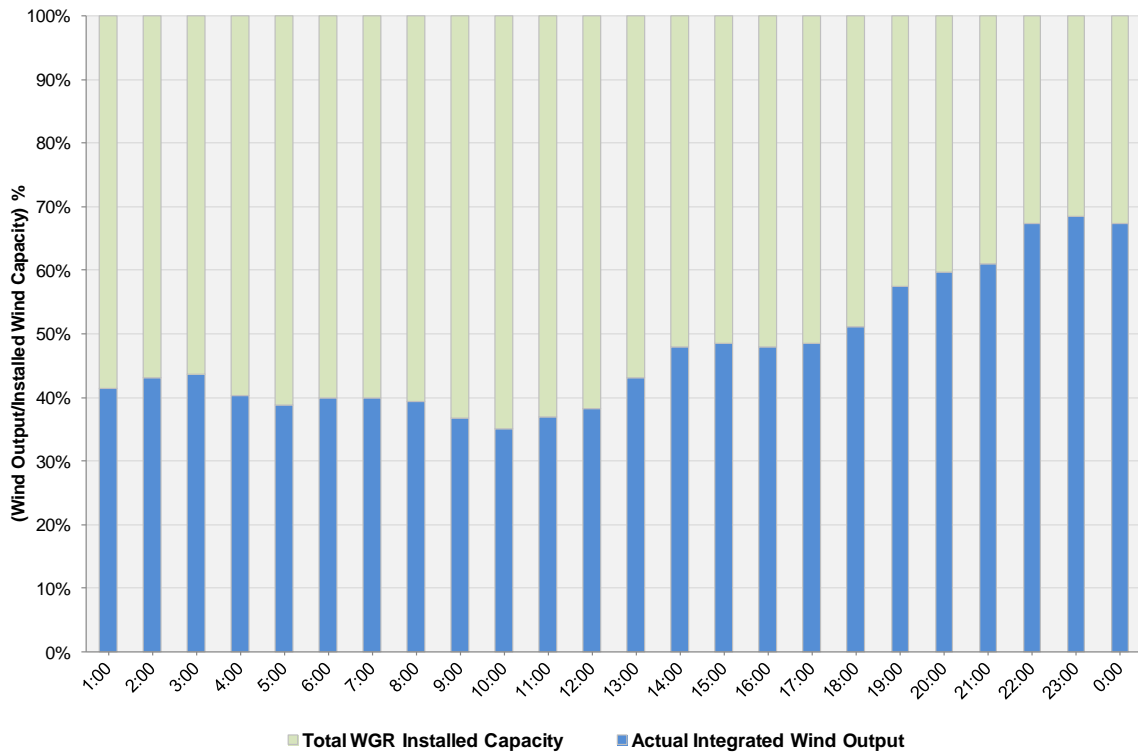
## ERCOT Grid Operations Wind Integration Report: 04/06/12

Peak Load	<b>40,707 MW</b>
Load Peak Hour (HE)	<b>17</b>
Wind over Peak	<b>4,748 MW</b>
Wind Record 03/18/12	<b>7,917 MW</b>
Max Wind Value	<b>6,847 MW</b>
Wind Peak Time	<b>22:15</b>
Wind Integration %	<b>19.71%</b>

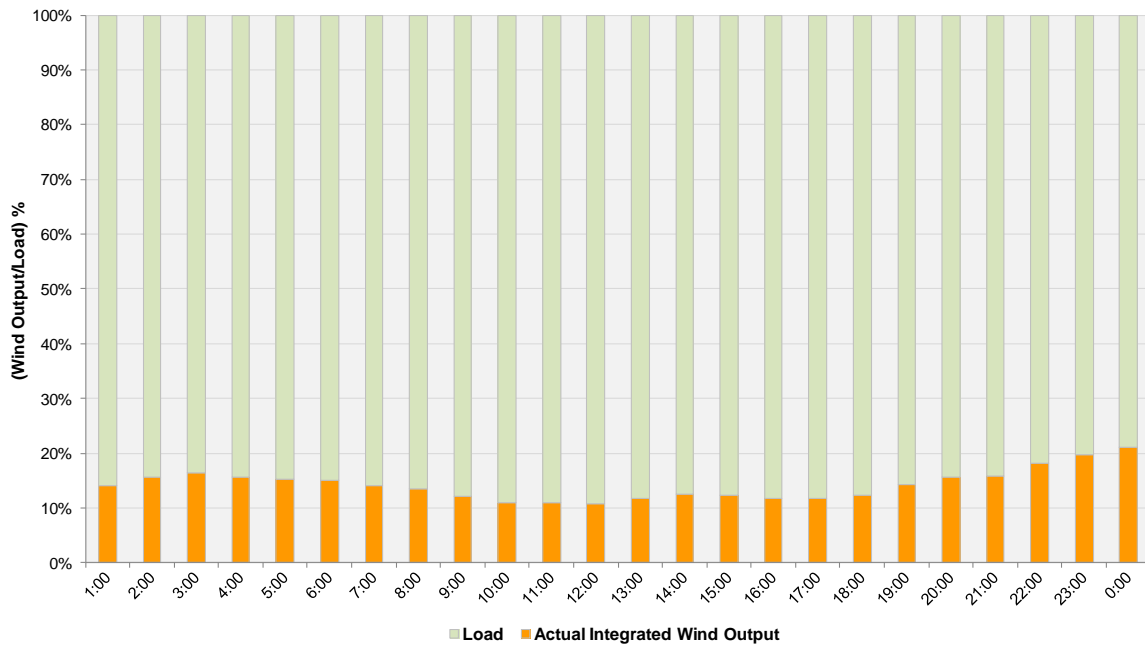
**Hourly Average Actual Load vs. Actual Wind Output  
04-06-2012**



**Actual Wind Output as a Percentage of the Total Installed Wind Capacity**  
**04-06-2012**



**Actual Wind Output as a Percentage of the ERCOT Load**  
**04-06-2012**



ERCOT Load vs. Actual Wind Output 3/30/2012 - 4/6/2012

